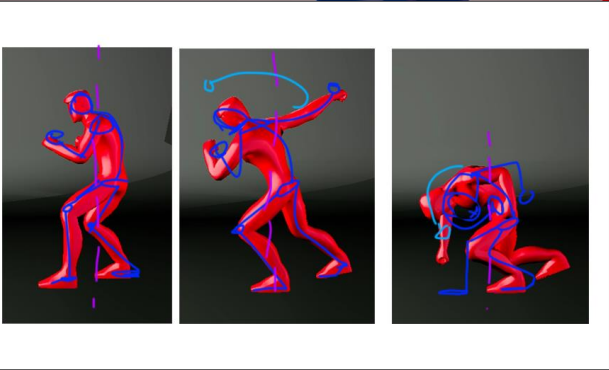
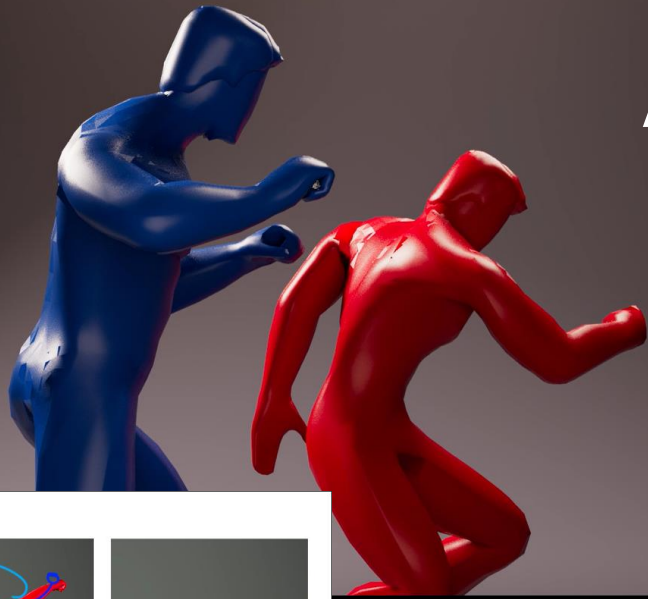


A high-angle, top-down photograph of a person with their hair in a bun, wearing a light-colored long-sleeved shirt, sitting at a wooden desk. They are viewed from behind, looking at a laptop screen. The desk is cluttered with various items: a smartphone, a candle, a mug, a glass pitcher, papers, and a notebook. The person's right hand is holding a pen and writing in the notebook. The scene is dimly lit, with a lamp visible on the left side of the desk.

SUMMER PRESENTATION

RESEARCH TOWARDS FINAL MAJOR PROJECT

PREVIOUS ANIMATIONS



“YOUR PERCEPTION OF THE WORLD”

FAMILY DYNAMICS



TV SITCOMS



IN FILM ...





Free Workshop: Animating Facial Expressions with Disney Animator Brendan Gottlieb

Animation Mentor • 1.3K views • 2 months ago



Free Workshop: Mastering Lip Sync in Animation with Disney Animation Supervisor Ere Santos

Animation Mentor • 3.7K views • 3 months ago

LIFE DRAWINGS FROM MY COMMUTE TO WORK



A digital illustration of two cryptids in a forest. The cryptid on the left is dark brown and has two small white eyes. The cryptid on the right is reddish-brown and is leaning against a tree trunk. The background is a dense forest with trees and foliage in shades of green, brown, and orange.

CRYPTID



HUNTING BIGFOOT

A FILM BY TAYLOR GUTERSON



MOUNTAIN MONSTERS



MONSTERQUEST



CREATURE ANIMATION RESEARCH



Creature Animation - Workflow Tips
14K views • 4 years ago
AnimSchool
In AnimSchool's VFX class, instructor Tony Mecca talks about some workflow tips for animating creature shots. This is a clip from ...



How to Build Visual Memory for Creature Animation
10K views • 3 years ago
AnimSchool
AnimSchool Tips: How to Build Visual Memory for Creature Animation Animating creatures for the VFX and animation industry is ...



VFX Artists DEBUNK Paranormal Creatures
1.9M views • 2 years ago
Corridor Crew
THIS EPISODE - Do creatures of the dark live among us? Sam and Niko set their sights on the internet's creepiest...
3 moments CAMERA MOVES AND STOPS | CRYPTID WALKS THROUGH SHOT | MAKE...



VFX Artists DEBUNK Bigfoot
997K views • 1 year ago
Corridor Crew
Sam and Niko venture deep into the woodlands of North America in an attempt to find out if viral Bigfoot footage L...
4K
12 chapters Intro | Shoutout | Patterson gimlet | The Bigfoot Guy | The Swamp Guy | Bigfoot...



VFX Artists DEBUNK Sea Monsters
630K views • 1 month ago
Corridor Crew
Niko, Sam, and Wren use their combined decades of VFX experience to dissect underwater phenomena and sea c...
4K
7 chapters Debunking Deep Sea Creatures | Loch Ness Monster | Build a Sea Creature...



HUNTING HEEHOO

August 23 1923

Editor's Note: 3 weeks after the incident between the Heehoo and the Heehoo, the Heehoo was reported to have been seen in the mountains of the Heehoo. It is reported to be a very large and powerful animal, and is said to be very much like a bear. It is said to be very much like a bear, and is said to be very much like a bear.

Heehoo: The Heehoo is a very large and powerful animal, and is said to be very much like a bear. It is reported to be a very large and powerful animal, and is said to be very much like a bear. It is reported to be a very large and powerful animal, and is said to be very much like a bear.

Heehoo's anatomy: The Heehoo's anatomy is very much like a bear's. It is reported to be a very large and powerful animal, and is said to be very much like a bear. It is reported to be a very large and powerful animal, and is said to be very much like a bear.

Heehoo's habits: The Heehoo is said to be very much like a bear. It is reported to be a very large and powerful animal, and is said to be very much like a bear. It is reported to be a very large and powerful animal, and is said to be very much like a bear.

GO THE GNGOZZLER

WAR IN YOUR TOOTHIES!

The Gngozler is a very large and powerful animal, and is said to be very much like a bear. It is reported to be a very large and powerful animal, and is said to be very much like a bear. It is reported to be a very large and powerful animal, and is said to be very much like a bear.

Gngozler: The Gngozler is a very large and powerful animal, and is said to be very much like a bear. It is reported to be a very large and powerful animal, and is said to be very much like a bear. It is reported to be a very large and powerful animal, and is said to be very much like a bear.

Gngozler's anatomy: The Gngozler's anatomy is very much like a bear's. It is reported to be a very large and powerful animal, and is said to be very much like a bear. It is reported to be a very large and powerful animal, and is said to be very much like a bear.

Gngozler's habits: The Gngozler is said to be very much like a bear. It is reported to be a very large and powerful animal, and is said to be very much like a bear. It is reported to be a very large and powerful animal, and is said to be very much like a bear.

DO NOT TRY TO ENTER!



Displacer Beast

The displacer beast's tentacles have a reach of 10 feet, and they are used to attack while keeping enough distance to maintain their illusion. The tentacles and its long eyes are that a bit will do both. Unleashing and piercing damage. Fig 2

Notice to the lycanthrope: Displacer beasts are their own magic to bend light so that they appear to be normal, but from their actual positions, disorienting anyone trying to attack the creature. Members of the Unstable Court captured displacer beasts, selectively breeding to enhance the beast's illusion and predatory nature.

Fig 1

Cow Anatomy

Fig 1 - Surface Anatomy

Part	Number	Part	Number	Part	Number
1. Head	1	11. Shoulder	11	21. Udder	21
2. Neck	2	12. Withers	12	22. Flank	22
3. Back	3	13. Ribs	13	23. Tail	23
4. Chest	4	14. Pelvis	14	24. Hoof	24
5. Stomach	5	15. Leg	15	25. Claw	25
6. Liver	6	16. Foot	16	26. Horn	26
7. Lung	7	17. Tail	17	27. Ear	27
8. Heart	8	18. Tail	18	28. Eye	28
9. Kidney	9	19. Tail	19	29. Ear	29
10. Bladder	10	20. Tail	20	30. Ear	30

Fig 2 - Skeleton

Fig 3 - Internal Organs

Fig 4 - Muscles

Fig 5 - Circulatory System

Fiskerton Phantom

